

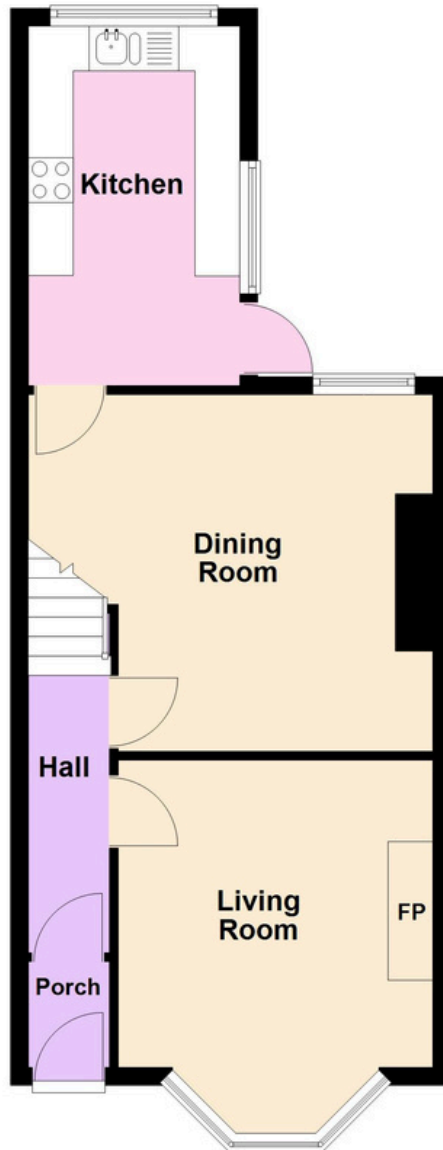


61 Gloucester Road, Staple Hill, BS16 4SH

£320,000

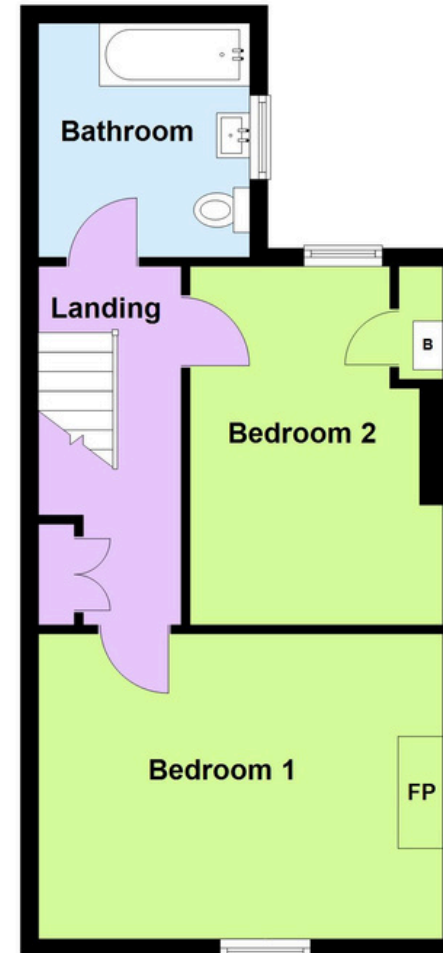
Ground Floor

Approx. 43.9 sq. metres (473.0 sq. feet)



First Floor

Approx. 40.3 sq. metres (433.9 sq. feet)



Total area: approx. 84.2 sq. metres (906.8 sq. feet)

This plan is for illustrative purposes only. Whilst every care has been taken to ensure the accuracy of the floorplan, measurements, door/window positions and rooms are approximate and no responsibility is taken for any error/omissions
Plan produced using PlanUp.